


vtech[®]
baby

Parent's Guide

Explore and Learn Elephant Mat



91-003948-001 

VTech understands that a child's needs and abilities change as they grow and with that in mind we develop our toys to teach and entertain at just the right level...

vtech *Baby*

Toys that will stimulate their interest in different textures, sounds and colours

I am...

...responding to colours, sounds and textures

...understanding cause and effect

...learning to touch, reach, grasp, sit-up, crawl and toddle

Birth-36 months



Pre-School

Interactive toys to develop their imagination and encourage language development

I want...

...to get ready for school by starting to learn the alphabet and counting

...my learning to be as fun, easy and exciting as can be

...to show my creativity with drawing and music so my whole brain develops

3-6 years



Electronic Learning Computers

Cool, aspirational and inspiring computers for curriculum related learning

I need...

...challenging activities that can keep pace with my growing mind

...intelligent technology that adapts to my level of learning

...National Curriculum based content to support what I'm learning at school

4-10 years

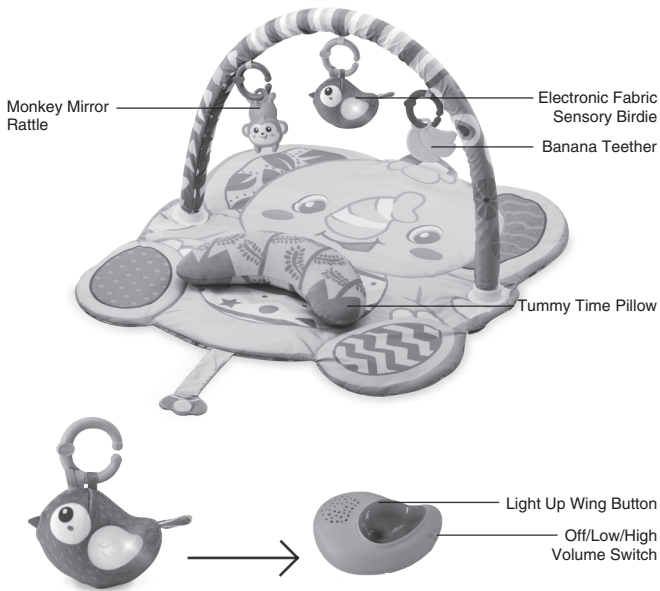


To learn more about this and other VTech® products, visit www.vtech.co.uk

INTRODUCTION

Thank you for purchasing the VTech® Explore and Learn Elephant Mat!

This 3-in-1, grow-with-me toy is great for your little one to explore and discover. Configure for gym play, tummy time or take-along play all centred around a friendly bird character. Press the bird's wing to choose from 3 fun playlists; classic, soothing or playtime. Baby will also enjoy 3 interchangeable dangling accessories; teether, birdie and self-discovery mirror, along with varied fabrics and textures.



INCLUDED IN THIS PACKAGE

- One Parent's Guide

One playmat



One arch



Two arch supports



Tummy time pillow



Three C rings



One electronic fabric sensory birdie



One monkey mirror rattle



One banana teether



WARNING:

All packing materials such as tape, plastic sheets, packaging locks, removable tags, cable ties, cords and packaging screws are not part of this toy and should be discarded for your child's safety.

NOTE:

Please keep this Parent's Guide as it contains important information

NOTE:

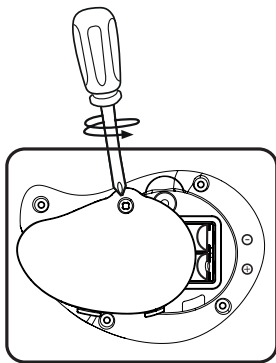
Please remove the electronic module before hand washing.



GETTING STARTED

Battery Removal and Installation

1. Make sure the unit is turned Off.
2. Locate the battery cover on the back of the unit. Use a screwdriver to loosen the screw.
3. If used batteries are present, remove these batteries from the unit by pulling up on one end of each battery.
4. Install 2 new 'AAA' (AM-4/LR03) batteries following the diagram inside the battery box. (For best performance, alkaline batteries or fully charged Ni-MH rechargeable batteries are recommended).
5. Replace the battery cover and tighten the screw to secure.





WARNING:

Adult assembly required for battery installation.

Keep batteries out of reach of children.

IMPORTANT: BATTERY INFORMATION

- Insert batteries with the correct polarity (+ and -).
- Do not mix old and new batteries.
- Do not mix alkaline, standard (carbon-zinc) or rechargeable batteries.
- Only batteries of the same or equivalent type as recommended are to be used.
- Do not short-circuit the supply terminals.
- Remove batteries during long periods of non-use.
- Remove exhausted batteries from the toy.
- Dispose of batteries safely. Do not dispose of batteries in fire.

RECHARGEABLE BATTERIES:

- Remove rechargeable batteries from the toy before charging.
- Rechargeable batteries are only to be charged under adult supervision.
- Do not charge non-rechargeable batteries.



The crossed-out wheellie bin symbols on products and batteries, or on their respective packaging, indicates they must not be disposed of in domestic waste as they contain substances that can be damaging to the environment and human health.

The chemical symbols Hg, Cd or Pb, where marked, indicate that the battery contains more than the specified value of mercury (Hg), cadmium (Cd) or lead (Pb) set out in Battery Directive (2006/66/EC).



The solid bar indicates that the product was placed on the market after 13th August, 2005.

Help protect the environment by disposing of your product or batteries responsibly.

VTech® cares for the planet.

Care for the environment and give your toy a second life by disposing of it at a small electricals collection point so all its materials can be recycled.

In the UK:

Visit www.recyclenow.com to see a list of collection points near you.

In Australia & New Zealand:

Check with your local council for kerbside collections.

ASSEMBLY INSTRUCTIONS

With the VTech® Explore and Learn Elephant Mat, safety comes first. To ensure your child's safety, adult assembly is required.

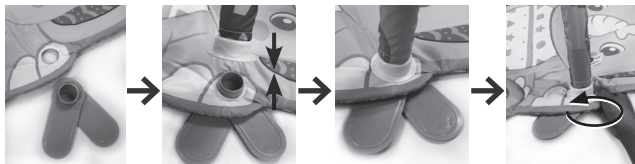
WARNING! For your child's safety, do not let your child play with the toy until it is fully assembled.

1. Connect the 3 C-links to the loops on the 3 dangling objects.

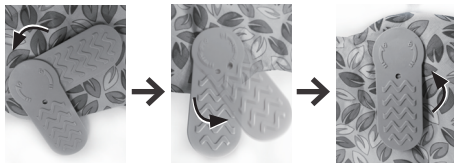


Playmat Assembly

1. Push the two arch supports through the holes on either side of the playmat from bottom to top, then push and screw the arch support bases over the top.



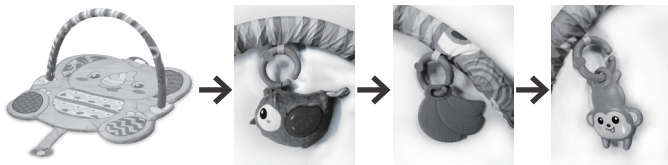
2. Turn the arch support bases 360° to ensure a tight fit.



3. Straighten the 2 arms of each arch support to 180° along the edge of the playmat. The playmat and arch are now ready to stand.



4. When the playmat and arch are fully assembled, attach the dangling objects to the arch loops.

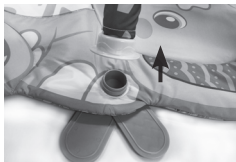


5. The Explore and Learn Elephant Mat is now ready for play.

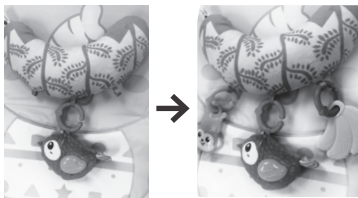


Tummy Time Play

1. Detach the arch supports and arch support bases.



2. Connect the dangling objects to the loops on the tummy time cushion.



3. The Explore and Learn Elephant Mat is now ready for tummy time play.



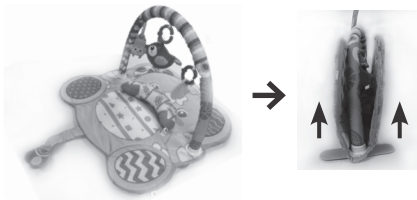
Take-Along Play

With the C-links attached for tummy time play, use the 3 outer C-links to attach to a buggy or carrier bar.

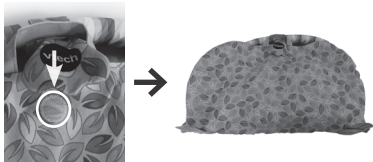


Storage/Travel

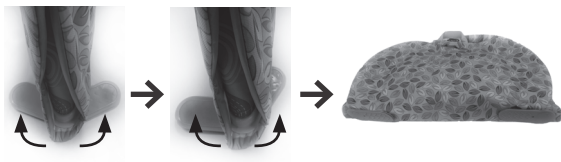
1. Fold both sides of the playmat towards each other.



2. Secure using the Velcro-like attachment tab.



3. Turn each arch support so that they sit under the folded playmat.



4. Use the handle to transport or store.



PRODUCT FEATURES

1. OFF/LOW/HIGH VOLUME SWITCH

To turn the unit ON, slide the **OFF/LOW/HIGH VOLUME SWITCH** from the OFF position (●) to the LOW (Ⓛ) or HIGH (Ⓜ) position. To turn the unit OFF, slide the **OFF/LOW/HIGH VOLUME SWITCH** to the OFF (●) position.



2. AUTOMATIC SHUT-OFF

To preserve battery life, the **VTech® Explore and Learn Elephant Mat** will automatically power-down after approximately 30 seconds without input after each 8-11 minute program. To put the toy to sleep at any time whilst it's playing, press and hold down the bird's wing button for three seconds and you will hear a short tune before it powers down. The unit can be turned on again by pressing the bird's wing button either one time to resume playing the last playlist, or by pressing and holding down the button for three seconds to restart the toy.

NOTE: if the unit repeatedly powers down, we suggest changing the batteries.

ACTIVITIES

1. Electronic Birdie

Slide the **OFF/LOW/HIGH VOLUME SWITCH** to turn the unit on. You will hear a song and a phrase asking you to press the bird's wing button to choose a playlist. Press the birdie's **Light Up Wing Button**:
One press: Playtime playlist. This plays a mixture of lively phrases, melodies, sounds and three songs.

Press twice: Classics playlist. This plays upbeat children's melodies.



Press three times: Soothing playlist. This plays a mixture of soothing well-known melodies and sounds.

The **Light Up Wing Button** will flash along with the sounds.

NOTE: To exit Demo Mode and enter into Normal Play Mode, slide the OFF/LOW/HIGH VOLUME SWITCH to the OFF position, then slide it to the LOW or HIGH position.

2. Dangling Accessories

The 3 dangling accessories; **Banana Teether**, **Electronic Fabric Sensory Birdie** and **Monkey Mirror Rattle** can be used in all three play modes. Simply attach to the gym arch or to the tummy time pillow.



MELODY LIST:

1. A-Tisket, A-Tasket
2. Looby Lou
3. Pop Goes the Weasel
4. Hey Diddle Diddle
5. Do You Know the Muffin Man?
6. Here We Go 'Round the Mulberry Bush
7. Mary Had a Little Lamb
8. Skip to My Lou
9. Hickory Dickory Dock
10. Aiken Drum
11. London Bridge is Falling Down
12. Listen to the Mockingbird
13. Rock-a-Bye Baby
14. Bach's Minuet in G
15. Twinkle Twinkle Little Star
16. Hush Little Baby
17. Brahm's Lullaby



SONG LYRICS

Tummy Time Song

Tummy time is so much fun,
Spending time on my tummy-tum-tum!

Rainbow Song

There's a rainbow,
Over our heads,
A rainbow,
A colourful rainbow!

Move Like the Animals Song

Hop like a frog,
Swim like a fish,
Move like the animals!

Sway like the elephant,
Swoosh like the birds,
Move like the animals do!

CARE & MAINTENANCE

1. The fabric covering of the bird is washable. Please remove the electronic module before hand washing the bird.
2. Keep the unit out of direct sunlight and away from any direct heat source.
3. Remove the batteries when the unit will not be in use for an extended period of time.
4. Do not drop the unit on hard surfaces and do not expose the electronic module to moisture or water.



TROUBLESHOOTING

If for some reason the unit stops working or malfunctions, please follow these steps:

1. Please turn the unit Off.
2. Interrupt the power supply by removing the batteries.
3. Let the unit stand for a few minutes, then replace the batteries.
4. Turn the unit On. The unit should now be ready to use again.
5. If the unit still does not work, install a brand new set of batteries.

If the problem persists, please contact our Consumer Services Department and a service representative will be happy to help you.



CONSUMER SERVICES

Creating and developing VTech® products is accompanied by a responsibility that we at VTech® take very seriously. We make every effort to ensure the accuracy of the information, which forms the value of our products. However, errors sometimes can occur. It is important for you to know that we stand behind our products and encourage you to call our Consumer Services Department with any problems and/or suggestions that you might have. A service representative will be happy to help you.

UK Customers:

Phone: 0330 678 0149 (from UK) or +44 330 678 0149 (outside UK)
Website: www.vtech.co.uk/support

Australian Customers:

Phone: 1800 862 155
Website: support.vtech.com.au

NZ Customers:

Phone: 0800 400 785
Website: support.vtech.com.au

Product Warranty/ Consumer Guarantees

UK Customers:

Read our complete warranty policy online at vtech.co.uk/warranty.

Australian Customers:

**VTECH ELECTRONICS (AUSTRALIA) PTY LIMITED –
CONSUMER GUARANTEES**

Under the Australian Consumer Law, a number of consumer guarantees apply to goods and services supplied by VTech Electronics (Australia) Pty Limited. Please refer to vtech.com.au/consumerguarantees for further information.



**Visit our website for more
information about our products,
downloads, resources and more.**

www.vtech.co.uk
www.vtech.com.au



TM & © 2021 VTech Holdings Limited.
All rights reserved.
Printed in China.
91-003948-001 